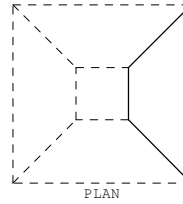
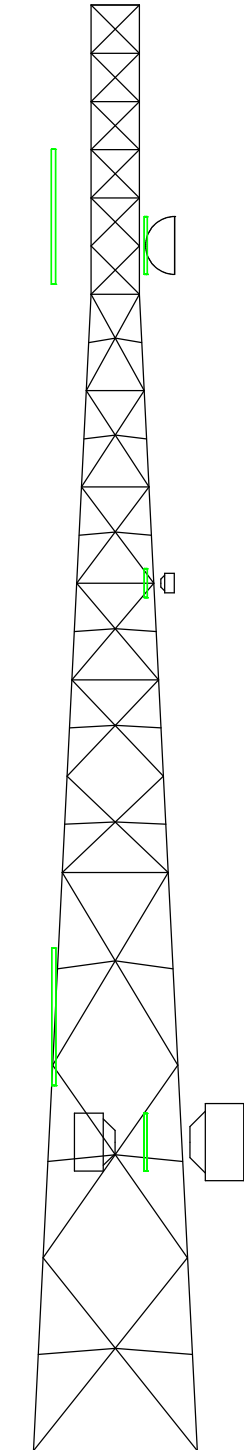


Leg	55 KSI	STD 10" $\Phi$	STD 8" $\Phi$	STD 6" $\Phi$	XS 4" $\Phi$	XS 3" $\Phi$	STD 2-1/2" $\Phi$
Diagonal	A36	STD 3" $\Phi$			STD 1-1/2" $\Phi$		L 1-3/4"x1-3/4"x3/16"
Horizontal	A36		A				B
Sub Horizontal	A325	C		D	E		
Brace Bolts							(1)-1/2"
Face Width		17.0'				5.0'	5.0'
Panel Height # Panels			3 @ 20.0'		6 @ 10.0'		6 @ 5.0'

150.0'  
125.0'  
120.0'  
100.0'  
80.0'  
70.0'  
60.0'  
50.0'  
40.0'  
20.0'  
0.0'



**NOTES:**

1. This is a demo tower
2. The loading may not be the typical loading on this type of tower.

**ANTENNA LIST**

NO	ELEV	ANTENNA	TX-LINE
1-2	128'	(2) DB230	(2)-1 5/8
3	125'	(1) 6 ft STD dish	(1)-1 5/8
4	90'	(1) 2 ft HP dish	(1)-EWP 180
5	32'	(1) 6 ft HP dish	(1)-7/8
6	32'	(1) 8 ft HP dish	(1)-7/8

**MATERIAL LIST**

NO	TYPE
A	$\square$ 2-1/2"x2-1/2"x3/16"
B	$\square$ 1-3/4"x1-3/4"x3/16"
C	$\square$ 2-1/2"x2"x3/16"
D	$\square$ 1-3/4"x1-3/4"x1/8"
E	$\square$ 1-3/4"x1-3/4"x1/8"

**TOTAL FOUNDATION LOADS**

H=29.93k  
V=23.94k  
M=2135.56k-ft  
T=9.48k-ft

**INDIVIDUAL FOOTING LOADS**

H=9.09k  
V=70.48k  
U=-64.88k



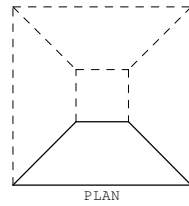
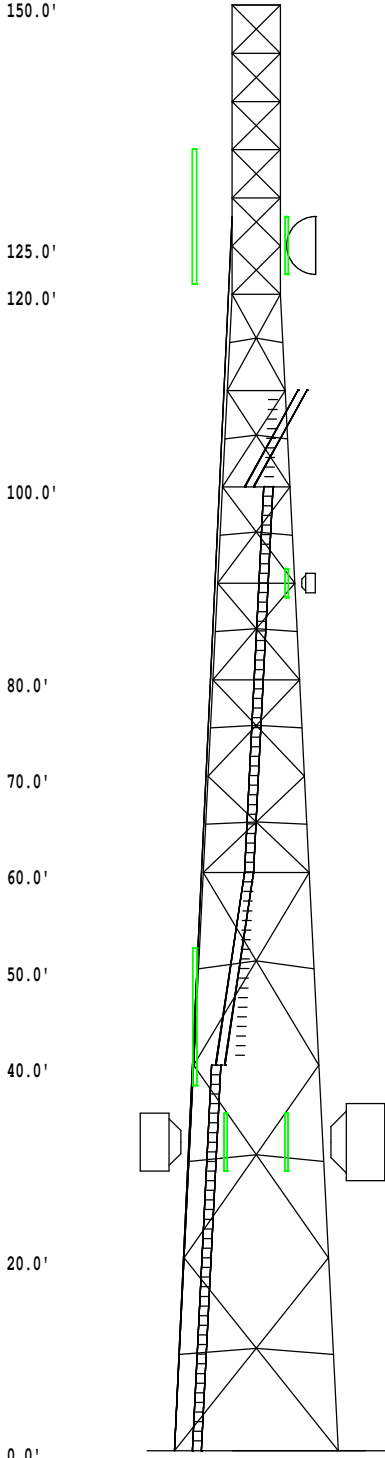
Since 1980

## Weisman Consultants Inc.

1110 Finch Avenue West, Suite 814, Downsview, Ontario M3J 2T2  
towers@weisman-consultants.com Tel: (416) 736-7453 Fax: (416) 736-4372

Client: WCI Client	Job No: 924233	Date: 24 sep 2004
Location: Some City, New York	Total Height: 150.00'	Tower Height: 150.00'
Standard: EIA-222-F	Design Wind & Ice: 100 mph, no ice	

Leg	55 KSI	STD 10" $\Phi$	STD 8" $\Phi$	STD 6" $\Phi$	XS 4" $\Phi$	XS 3" $\Phi$	STD 2-1/2" $\Phi$
Diagonal	A36	STD 3" $\Phi$			STD 1-1/2" $\Phi$		L 1-3/4"x1-3/4"x3/16"
Horizontal	A36		A				B
Sub Horizontal	A325	C		D	E		
Brace Bolts							
Face Width	17.0'		(1) -5/8"			(1) -1/2"	5.0'
Panel Height # Panels		3 @ 20.0'		6 @ 10.0'			6 @ 5.0'



**NOTES:**  
 1. This is a demo tower  
 2. The loading may not be the typical loading on this type of tower.

**ANTENNA LIST**

NO	ELEV	ANTENNA	TX-LINE
1-2	128'	(2) DB230	(2)-1 5/8
3	125'	(1) 6 ft STD dish	(1)-1 5/8
4	90'	(1) 2 ft HP dish	(1)-EWP 180
5	32'	(1) 6 ft HP dish	(1)-7/8
6	32'	(1) 8 ft HP dish	(1)-7/8

**MATERIAL LIST**

NO	TYPE
A	T 2-1/2"x2-1/2"x3/16"
B	T 1-3/4"x1-3/4"x3/16"
C	T 2-1/2"x2"x3/16"
D	T 1-3/4"x1-3/4"x1/8"
E	T 1-3/4"x1-3/4"x1/8"

**TOTAL FOUNDATION LOADS**

H=29.93k  
 V=23.94k  
 M=2135.56k-ft  
 T=9.48k-ft

**INDIVIDUAL FOOTING LOADS**

H=9.09k  
 V=70.48k  
 U=-64.88k



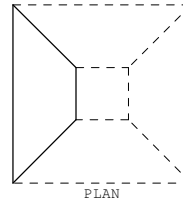
Since 1980

## Weisman Consultants Inc.

1110 Finch Avenue West, Suite 814, Downsview, Ontario M3J 2T2  
 towers@weisman-consultants.com Tel: (416) 736-7453 Fax: (416) 736-4372

Client: WCI Client	Job No: 924233	Date: 24 sep 2004
Location: Some City, New York	Total Height: 150.00'	Tower Height: 150.00'
Standard: EIA-222-F	Design Wind & Ice: 100 mph, no ice	

Leg	55 KSI	STD 10" Ø	STD 8" Ø	STD 6" Ø	XS 4" Ø	XS 3" Ø	STD 2-1/2" Ø
Diagonal	A36	STD 3" Ø			STD 1-1/2" Ø		L 1-3/4"x1-3/4"x3/16"
Horizontal	A36		A			2"x2"x1/8"	B
Sub Horizontal	A325	C	2"x2"x1/8"	D	E	2"x2"x3/16"	
Brace Bolts		(1)-5/8"			(1)-1/2"		
Face Width	17.0'					5.0'	5.0'
Panel Height # Panels		3 @ 20.0'			6 @ 10.0'		6 @ 5.0'



**NOTES:**

1. This is a demo tower
2. The loading may not be the typical loading on this type of tower.

**ANTENNA LIST**

NO	ELEV	ANTENNA	TX-LINE
1-2	128'	(2) DB230	(2)-1 5/8
3	125'	(1) 6 ft STD dish	(1)-1 5/8
4	90'	(1) 2 ft HP dish	(1)-EWP 180
5	32'	(1) 6 ft HP dish	(1)-7/8
6	32'	(1) 8 ft HP dish	(1)-7/8

**MATERIAL LIST**

NO	TYPE
A	2-1/2"x2-1/2"x3/16"
B	1-3/4"x1-3/4"x3/16"
C	2-1/2"x2"x3/16"
D	1-3/4"x1-3/4"x1/8"
E	1-3/4"x1-3/4"x1/8"

**TOTAL FOUNDATION LOADS**

H=29.93k  
 V=23.94k  
 M=2135.56k-ft  
 T=9.48k-ft

**INDIVIDUAL FOOTING LOADS**

H=9.09k  
 V=70.48k  
 U=-64.88k



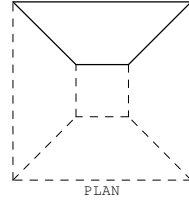
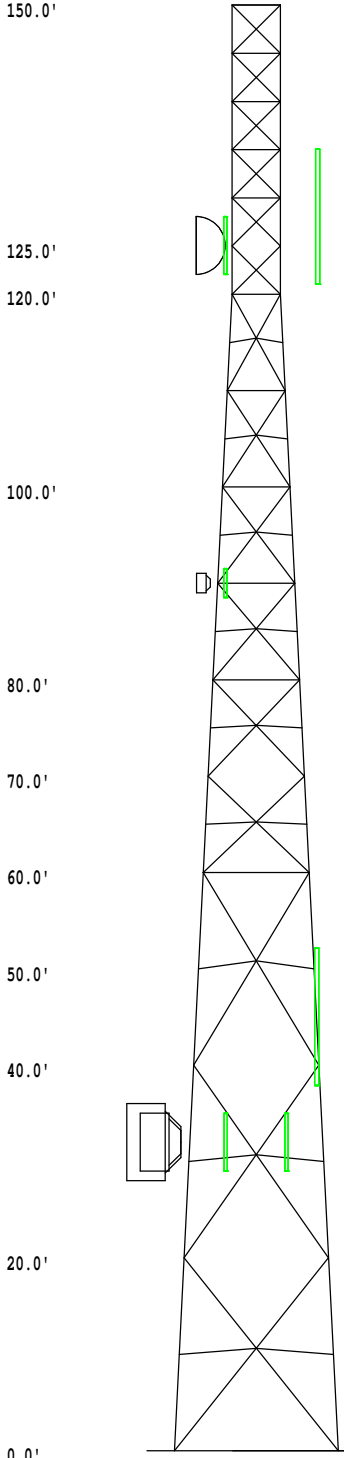
Since 1980

## Weisman Consultants Inc.

1110 Finch Avenue West, Suite 814, Downsview, Ontario M3J 2T2  
 towers@weisman-consultants.com Tel: (416) 736-7453 Fax: (416) 736-4372

Client: WCI Client	Job No: 924233	Date: 24 sep 2004
Location: Some City, New York	Total Height: 150.00'	Tower Height: 150.00'
Standard: EIA-222-F	Design Wind & Ice: 100 mph, no ice	

Leg	55 KSI	STD 10" Ø	STD 8" Ø	STD 6" Ø	XS 4" Ø	XS 3" Ø	STD 2-1/2" Ø
Diagonal	A36	STD 3" Ø			STD 1-1/2" Ø		L 1-3/4"x1-3/4"x3/16"
Horizontal	A36		A			2"x2"x1/8"	B
Sub Horizontal	A325	C	2"x2"x1/8"	D	E	2"x2"x3/16"	
Brace Bolts		(1)-5/8"				(1)-1/2"	
Face Width	17.0'					5.0'	5.0'
Panel Height # Panels		3 @ 20.0'			6 @ 10.0'		6 @ 5.0'



**NOTES:**  
 1. This is a demo tower  
 2. The loading may not be the typical loading on this type of tower.

**ANTENNA LIST**

NO	ELEV	ANTENNA	TX-LINE
1-2	128'	(2) DB230	(2)-1 5/8
3	125'	(1) 6 ft STD dish	(1)-1 5/8
4	90'	(1) 2 ft HP dish	(1)-EWP 180
5	32'	(1) 6 ft HP dish	(1)-7/8
6	32'	(1) 8 ft HP dish	(1)-7/8

**MATERIAL LIST**

NO	TYPE
A	2-1/2"x2-1/2"x3/16"
B	1-3/4"x1-3/4"x3/16"
C	2-1/2"x2"x3/16"
D	1-3/4"x1-3/4"x1/8"
E	1-3/4"x1-3/4"x1/8"

**TOTAL FOUNDATION LOADS**

H=29.93k  
 V=23.94k  
 M=2135.56k-ft  
 T=9.48k-ft

**INDIVIDUAL FOOTING LOADS**

H=9.09k  
 V=70.48k  
 U=-64.88k



Since 1980

## Weisman Consultants Inc.

1110 Finch Avenue West, Suite 814, Downsview, Ontario M3J 2T2  
 towers@weisman-consultants.com Tel: (416) 736-7453 Fax: (416) 736-4372

Client: WCI Client	Job No: 924233	Date: 24 sep 2004
Location: Some City, New York	Total Height: 150.00'	Tower Height: 150.00'
Standard: EIA-222-F	Design Wind & Ice: 100 mph, no ice	