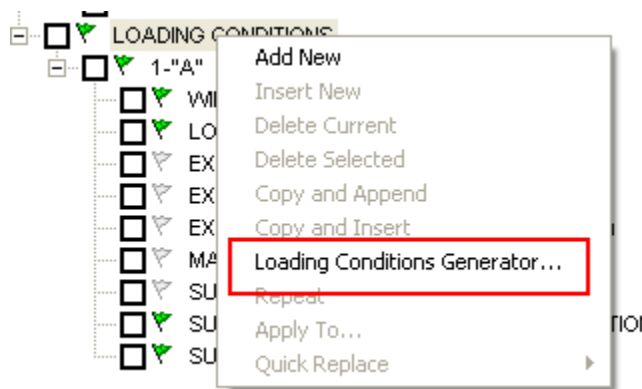


GUYMASTER Release Notes  
For version 8.3.2 as of October 17, 2025

1. Added: The user may now specify **MAST RESTRAINTS AT SUPPORT** for the self-supporting tower models. The same table that is used for guyed towers is used here.
2. Introduced the **Loading Conditions Generator** to quickly create loading conditions for the analysis. The generated loading parameters, including load factors, can be saved as templates and easily reused in future projects.



**Loading Conditions Generator (Default)**

File

Wind

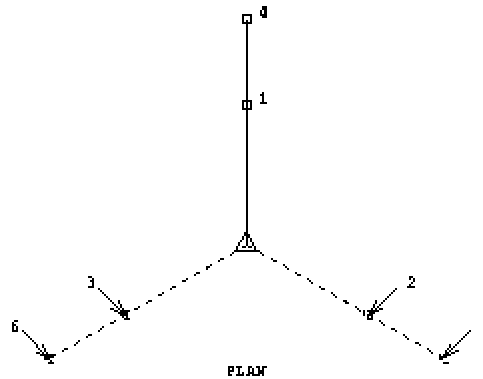
Start Azimuth: 0, Azimuth Increase: 30, # Directions: 12, Wind Profile: ☒ Standard, ☐ Defined by User

Load Factors

	Wind Speed	Velocity Pressure	Ice Thickness	Bare		Iced			
				Wind	Dead	Wind	Dead	Ice	
<input checked="" type="checkbox"/> Strength	0	0	0	1.4	1.25	0.7	1.25	1.45	<input type="checkbox"/> Suppress Max. Displacement
<input type="checkbox"/>				1.4	0.95	0.7	0.95	0.82	
<input checked="" type="checkbox"/> Service	0	0	0	1	1	0.5	1	1	
<input type="checkbox"/> Seismic			0	0	1	0	1	0.5	

Apply

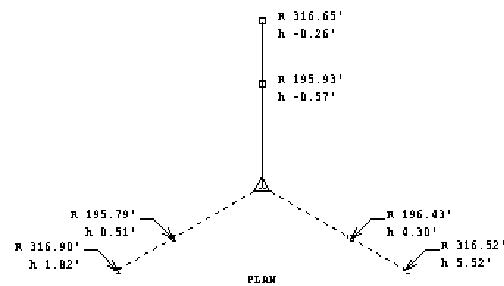
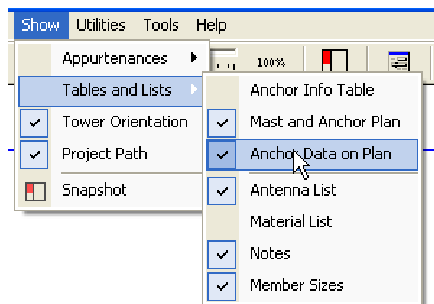
3. Added: support of the tension-only diagonal in the torsion resistor analysis.
4. Updated: plan view representation for the guyed towers in the DrawTower module
  - a. By default, the guy anchor information is now displayed in the table format



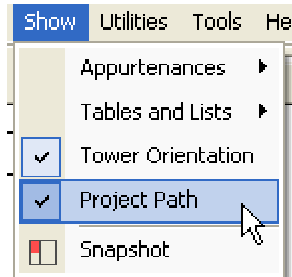
ANCHOR LIST

ID	ASIMUTH	RADIUS	ELEVATION
1	0	195.9'	-0.6'
2	120	196.4'	0.3'
3	240	195.8'	0.5'
4	0	316.6'	-0.3'
5	120	316.5'	5.5'
6	240	316.9'	1.8'

- b. The anchor data can also be displayed directly on the plan view by turning the “Anchor data on Plan” flag on:



5. The project file location/path at the bottom of the DrawTower page can be removed by using the Show/Hide Project file from the “Show” menu



6. Change in the DrawResults module for the Australian standard only. The ratio of factored capacity is now represented by EFL/FR instead of FR/EFL as in the previous version

