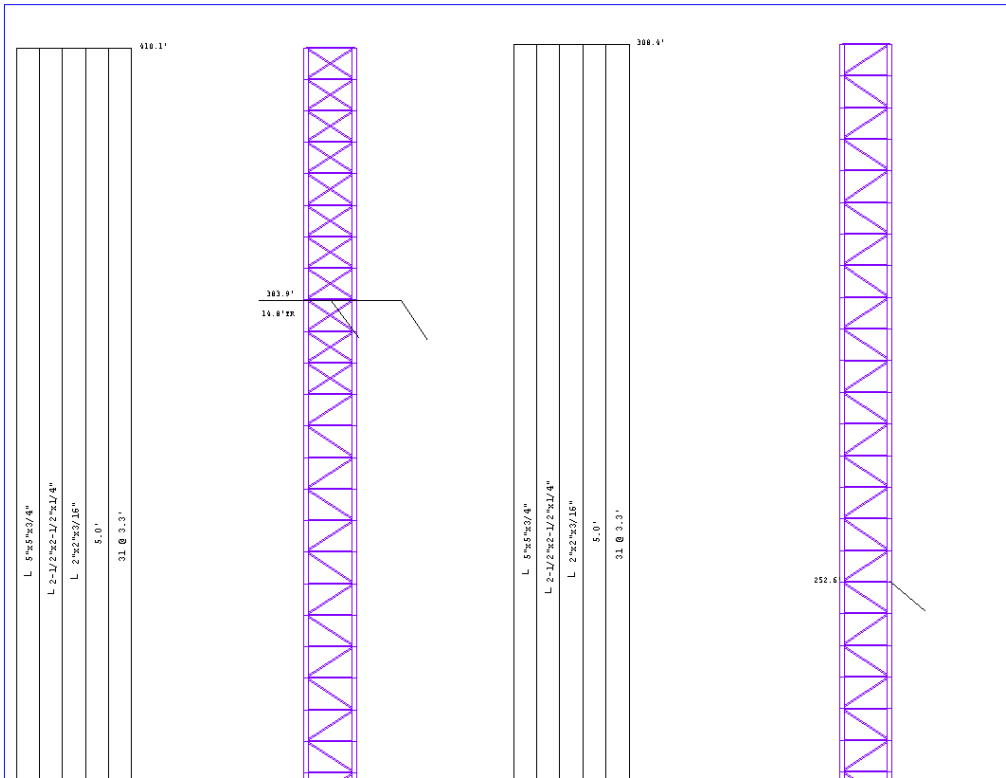
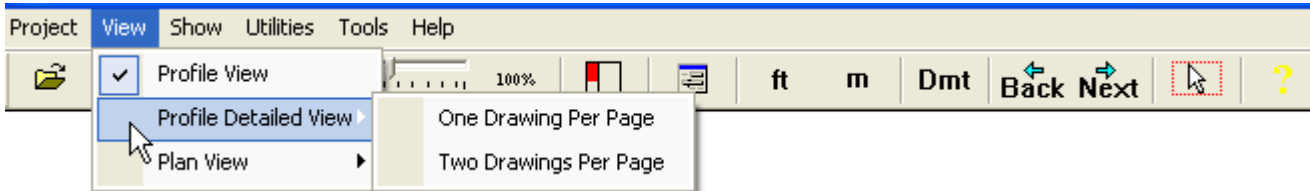


GUYMASTER Release Notes
For version 7.1.0 as of May 28, 2019

1. In Draw Tower- Profile Views, added display of structural components on enlarged views of portions of tower that improve visibility of details in geometry.

The structure is subdivided into portions that will allow better visibility and the user can choose to display one or two such portions per page.



2. In Guyed Towers, the user can now specify additional support points in the MAST RESTRAINTS AT SUPPORTS table without the need to specify any guys at those levels. This is especially useful for guyed towers supported, at some point above the base, by the roof or penthouse
3. Performance improvement for Undo/Redo functionality